

# UB INNOVATION CENTER

MARSHA MATTO | HUSSEIN HUSSEIN | QIUSHI ZHANG

Spring 2017 | Masters in Professional Studies in Design Management |  
Program Chair, Professor Alex White | Thesis Advisor, Professor Dilek Katgi

## ABSTRACT

We will fulfill important University needs by planning a restoration of a historical home and the possibility of retrofitting the building to improve energy and environmental performance as a "smart building" on campus. With in the house we will create a University innovation center. We will introduce an app for the UB community to connect them to social and educational activities taking place on campus and in the greater Bridgeport area.

## Why 82 Marina Park Street?

The University of Bridgeport owns eight historic homes, several are hubs of activity for students and faculty while others stand vacant coming closer and closer to their demise. We knew we wanted to use one of these grand historic homes for our project but it was not so easy to decide which one. When meeting with George Estrada, Vice President of facilities for the University of Bridgeport we reviewed which houses would best suit our needs for this project. We kept in mind that this would be used by students and faculty alike and would need to provide as much space as possible. We met several times each time going through each building carefully, finally deciding on what the university calls, Darien Hall, the prior dormitory for law students. We felt strongly that this was the best choice, due to the fact that the basement level ceilings stand at 9' high with large brick arches defining the spaces. This gives us a full four floors to work with and 8600 square feet, making the house the perfect choice.

The Grippin house was acquired by the University of Bridgeport in 1959 and was primarily used for a dormitory for law students. The home was in full use until 1990, now standing vacant for 27 years. The significance of the Marina Park area in history is clearly marked in the beginning of Bridgeport itself as a city. From P.T. Barnum as one of the single most influential figures to the city, to the many innovators such as; William A. Grippin, Charles B. Read, Lewis B. Curtis, George Comstock, Waldo C. Bryant, John G. Howland, Allen B. Wilson, Nathaniel Wheeler and Joseph Noble, just to name a few. In the interest of preservation renovating this historical gem is a necessity.

## THE PROCESS OF APP DESIGN

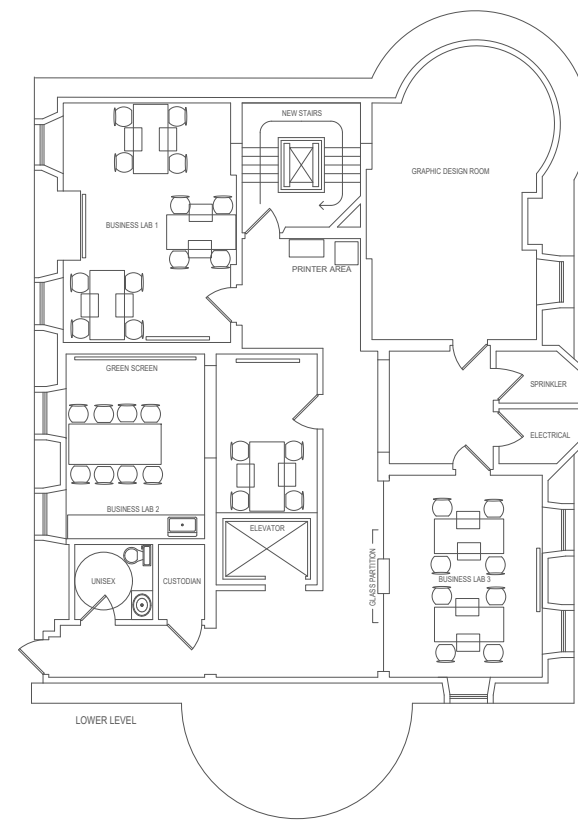
Design thinking is the process we used to ideate our abstract. We focused on human centered design to help us empathize with the students on campus, especially international students. We found that their need for connection was not be met by the university. UB Social is the answer. The students need a social application that can connect them to the educational and social events taking place on campus as well as in the city of Bridgeport. Through our research of other university's social apps we carefully formulated an app that is user friendly, connected to social media and contains the lacking information that we discovered through our surveys

S A S D

SHINTARO AKATSU SCHOOL OF DESIGN

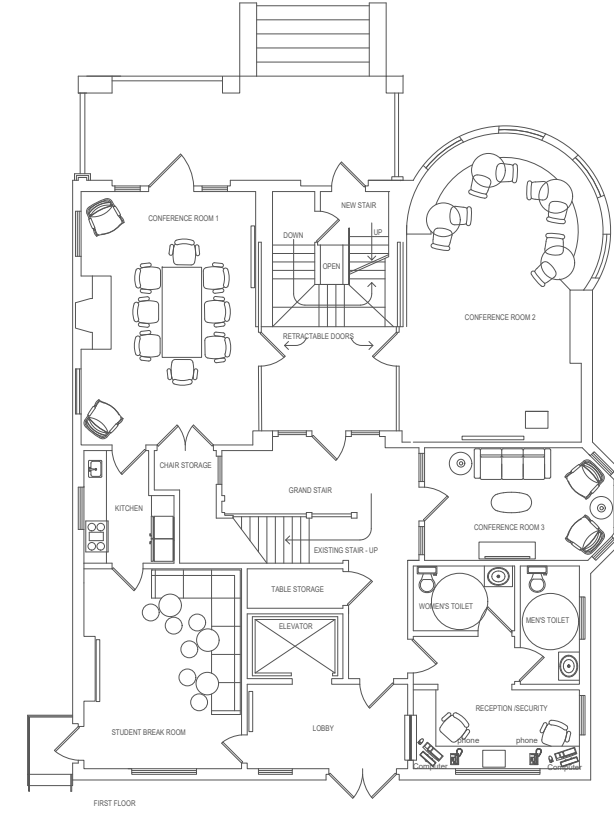


The concept was developed to help form connection between the University of Bridgeport and students, as well of creating awareness of events on campus and in the city of Bridgeport.



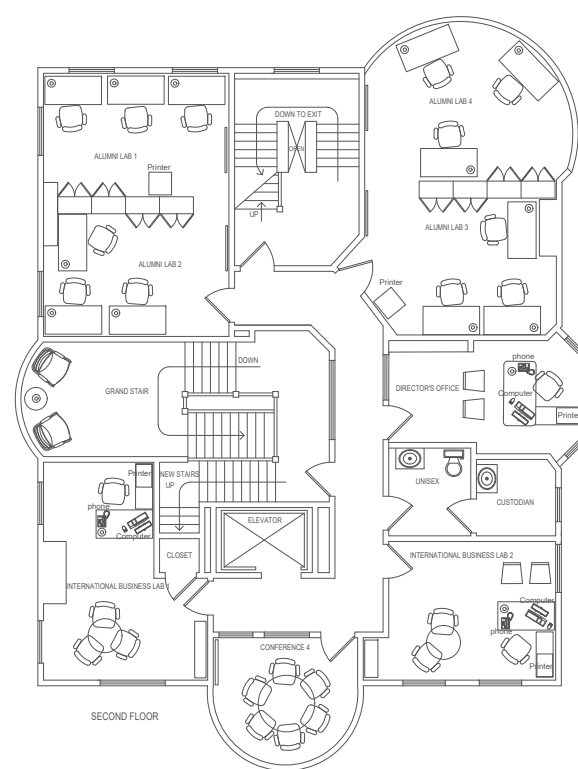
### LOWER LEVEL

Beginning steps of the process  
Maker space  
Graphic design printing press



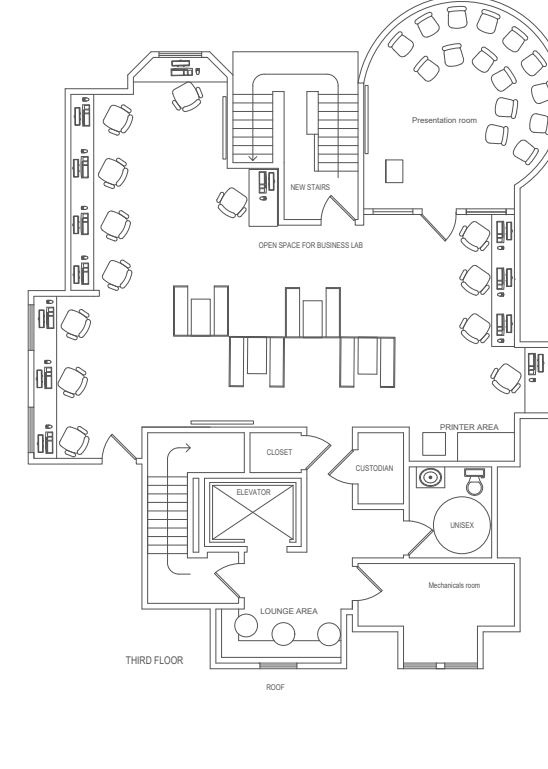
### FIRST FLOOR

Public event area  
Small meeting conference area  
Kitchen & student lounge



### SECOND FLOOR

Rentable "hot seats"  
International trade hub  
Director's office



### THIRD FLOOR

Presentation room  
Individual computer stations  
Small lounge area

## CREATING A HUMAN FRIENDLY BUILDING

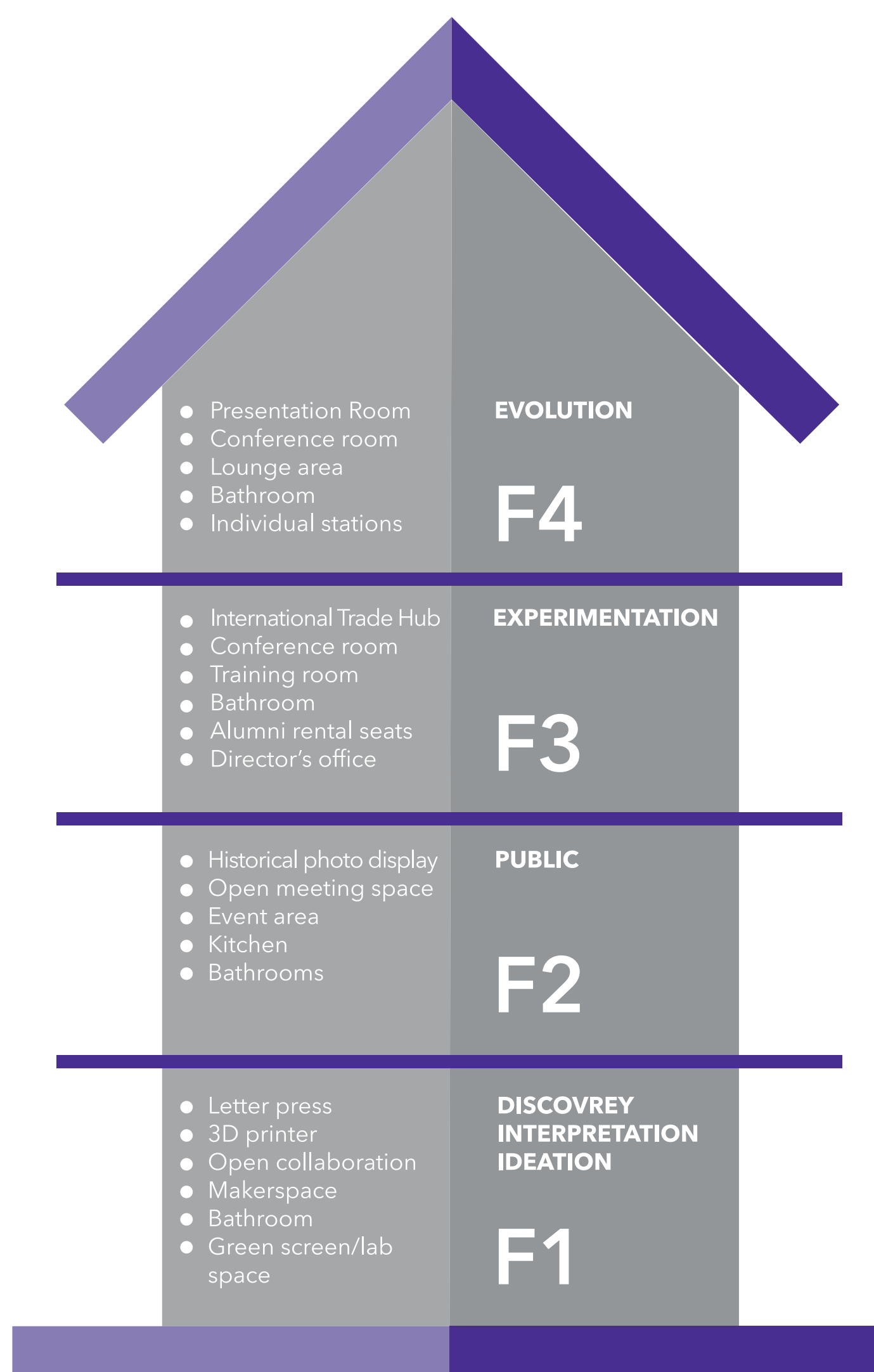
The interior of any building should always consider the end user. What are the needs? How can this environment aid inspiration and motivate? These are important questions to be considered when designing a center for innovation. Creative people, "designers are reflective beings and need to go through periods of divergent and convergent thinking. These different thinking and working styles require different environmental conditions, for example, open-plan and lively spaces for stimulation, VS, quiet areas for concentrated thinking. (Best, 2006)

## SOLUTION

Our proposed solution, is to forge the way for better connection between the UB community and the international and domestic student, through the development of an application based on human centered research, discovering and satisfying the needs of the end users. Using human centered research we have identified several important unmet needs. Those needs are connection, especially for international students, saving a home from sure destruction, and creating a center for innovation to bring the students of UB together as a stronger more united front for business. The UBIC will be open to all UB students wishing to form a business or create a product, or import and export goods. Every school is welcome and encouraged to come join the events, featuring current, valuable speakers.

The university will honor the rich history of Bridgeport, by acknowledging one of its most famous innovators, P.T. Barnum. Barnum's innovative spirit will live on through the University of Bridgeport Innovation Center Renovating 82 Marina Park Street, which was built during the time of the industrial revolution is a treasure that will be appreciated not only by the university but by the many residents of Bridgeport itself. 2017 is a time for change, change in the way we do business especially. Creating a center for bright young minds to work in, to dream in, and to achieve in is the focus of this thesis. There is no losing situation here, the UBIC is a win for the university as a whole, for Bridgeport, for the faculty and most of all for the students.

As we stated earlier, 2017 is a time for change. Changes in the way we live are a factor carefully considered and researched. Considering the health of our planet and the comfort of our students during the renovation process was one of our top priorities. Building smart coincides with building green. While green building is about building with efficiency and sustainability, smart building is about building with operational efficiencies, which go hand in hand. We have explored the LEED process in this thesis paper, but are not sure if the university will adopt it, due to the cost for the certification. Due to the generous gift from Mr. and Mrs. Bauer, this thesis project is coming to life during 2017 and should reach completion by December of 2017, in time for the spring semester of 2018.



UNIVERSITY OF BRIDGEPORT